

GE Healthcare



# Vivid *i*

Cardiovascular ultrasound system





Excellent raw data image quality.  
Advanced quantification.  
Increased diagnostic confidence.  
Streamlined workflow.  
In any clinical environment.

With more quantitative tools and a high level of image quality, Vivid *i* helps give you greater accuracy, more diagnostic confidence and increased productivity. All the functionality and high performance of our full-featured premium systems – in a portable design.

# Lightweight mobility. Heavyweight ability.

The Vivid\* *i* builds on the many innovative features and technologies of its predecessors, incorporating new features, quantitative analysis tools and applications that help further improve image quality and performance.

- Vivid *i* features a host of new technologies migrated from Vivid 7 and Vivid S6, such as the Ultra Definition image optimization algorithms, Smart Depth, Adaptive Reject and Wide Aperture, which provide excellent image quality and inspire higher clinical confidence in difficult-to-scan patients.
- In addition to Tissue Velocity Imaging (TVI), Tissue Tracking (TT), and Tissue Synchronization Imaging (TSI), the quantitative tools now include Auto EF and on board Quantitative Analysis.
- Intra-Cardiac Echo (ICE) imaging catheters open new application and care areas for your ultrasound systems.
- Sixteen probes – including transthoracic and transesophageal transducers for cardiac adult and pediatric exams, and linear, convex and Doppler probes – further extend Vivid *i*'s wide range of applications.
- EchoPAC's advanced quantitative analysis tools can be used with Vivid *i*'s raw data, optimizing workflow to match your real needs.



A small system that shows a lot of heart.

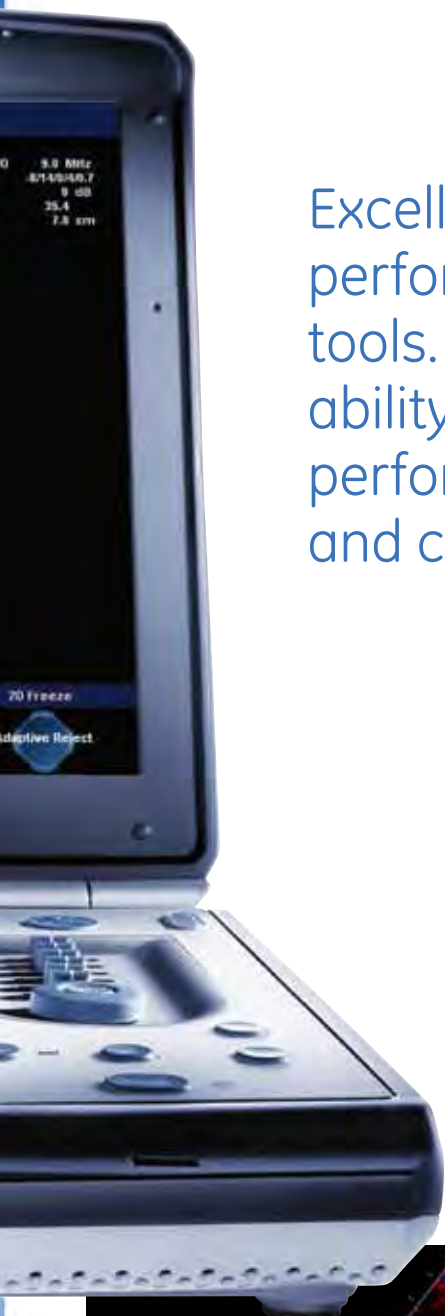


Visualize clearly. Scan efficiently. Analyze quickly. Vivid *i*'s excellent image quality and quantitative analysis tools bring innovation to portable ultrasound imaging.



#### **Intra-Cardiac Echo (ICE) imaging**

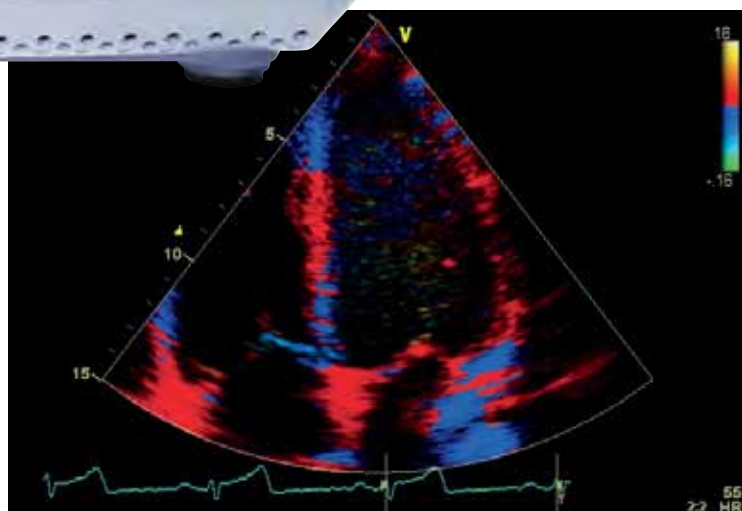
ICE catheters deliver excellent image quality and real-time visualization of cardiac structural anatomy, and therapy catheters for monitoring and guidance during interventional procedures. ICE can give you a better understanding of structural orientation during trans-septal puncture procedures to help you avoid clinical complications.



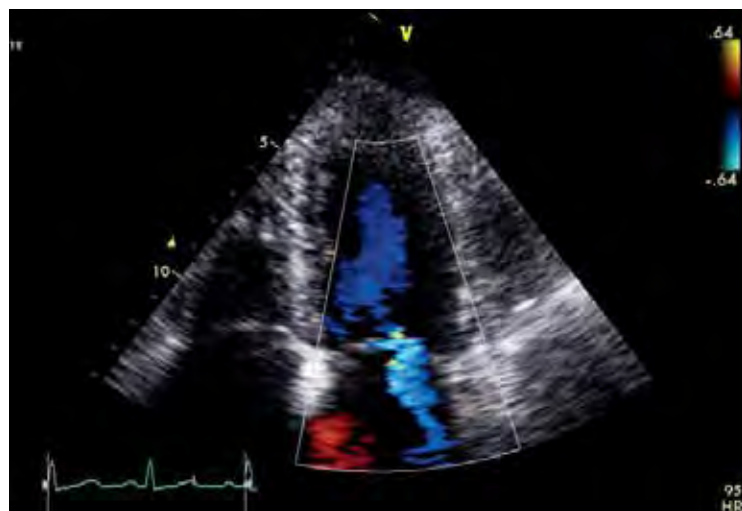
Excellent raw data image quality. Innovative performance features. Established clinical tools. One-touch image optimization. The ability to assess LV function and cardiac performance more clearly, effectively and confidently.

#### Performance features and clinical tools

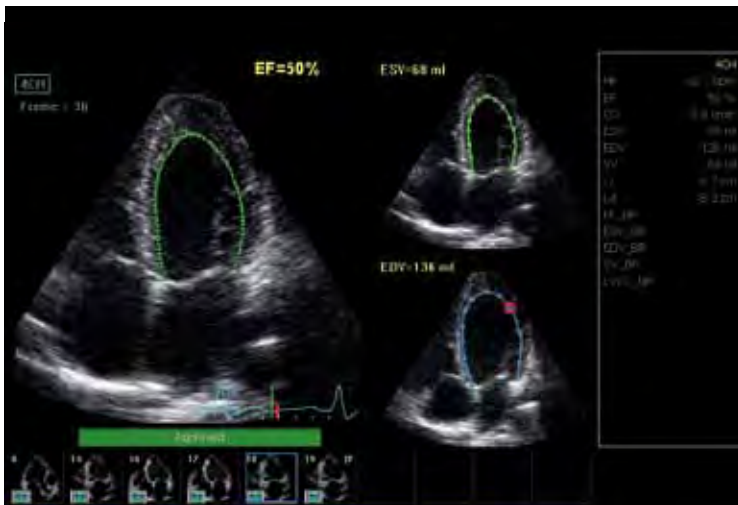
- New Ultra Definition algorithms for Speckle Reduction Imaging (SRI), Clarity and Adaptive Reject further optimize image quality.
- Smart Depth automatically adapts imaging parameters to help save time, and increase standardization among users.
- Smart Stress helps improve workflow, shorten optimization time and support reproducibility for review, wall segment scoring and reporting.
- Tissue Synchronization Imaging (TSI) translates comprehensive quantification into an easy-to-understand image demonstrating mechanical synchronicity of different myocardial segments.
- AutoEF measurement provides the ejection fraction - one of the most widely used clinical parameters.



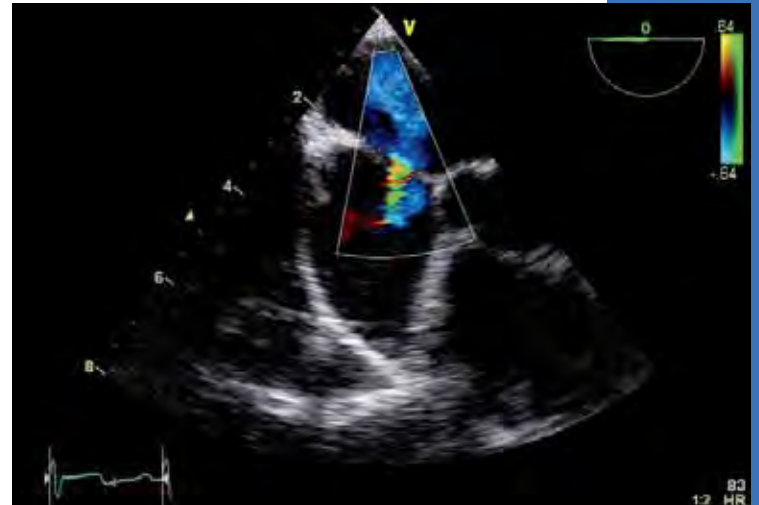
Tissue Velocity Imaging apical four chamber



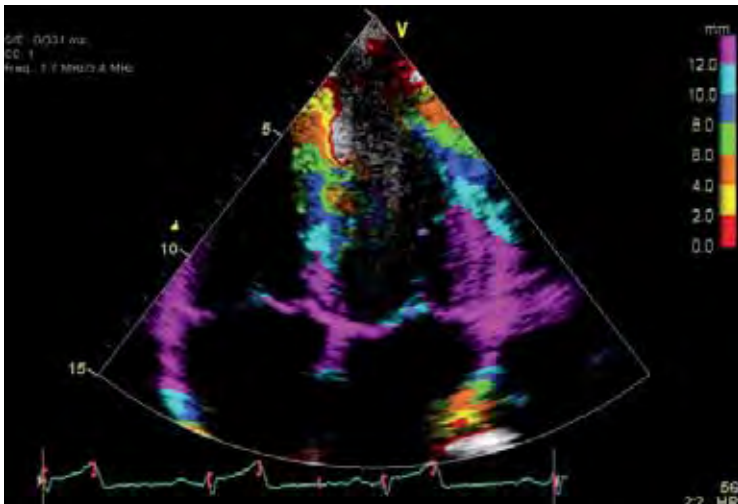
Mitral regurgitation apical four chamber



Auto EF



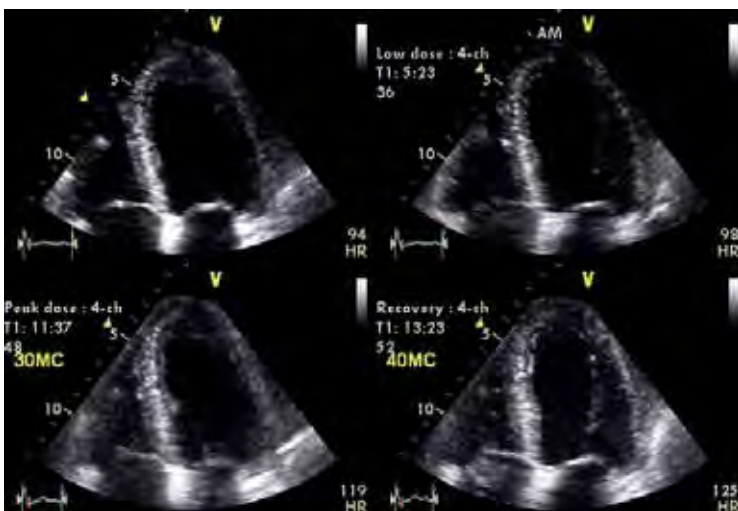
Transesophageal echo with color Doppler



Tissue Tracking



Common carotid artery measurement intima-media thickness



Dobutamine stress echo



At a patient's bedside. In the OR.  
In a satellite clinic or mobile imaging site. Vivid *i*'s compact size and light weight make it easy to take excellent ultrasound imaging performance to any clinical environment.

# Power. Performance. Pick up-and-go portability.

## OR/Anesthesia

- Supports perioperative needs with transthoracic examinations under challenging conditions.
- Enable monitoring with the help of adult or pediatric TEE.
- Support saphenous vein harvesting and carotid evaluations.
- Use the intra-operative probe to support specific diagnoses in the OR.
- Connect Vivid *i*'s TEE transducer to Vivid console systems using an adaptor.
- Continuously scan for up to one hour from battery.
- Share images remotely on any PC using the eVue option, for efficient and convenient consultations.

## Obstetrics/Gynecology

- Focus on fetal echo, or comprehensive examinations

## Pediatric Echocardiography

- Examine children of all ages, including newborns.
- Choose from a wide range of sector, micro convex, linear and transesophageal transducers plus a specific ECG cable.

## Shared Services

- Conduct additional vascular and abdominal exams with Vivid *i*'s comprehensive set of linear and convex transducers.
- Display blood flow with 2D-like spatial resolution and no color-flow-imaging artifacts with B-Flow and BFI (Blood Flow Imaging).
- Measuring the carotid artery's intima-media thickness quickly with the IMT analysis package may obtain early information on atherosclerosis risk.
- Wide Aperture improves the signal-to-noise ratio and spatial resolution for better penetration in deeper structures.







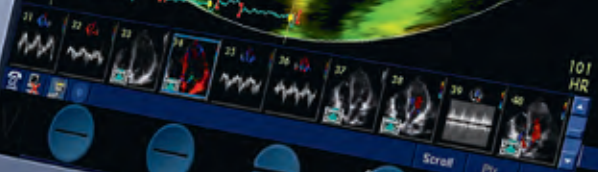
GE HEALTHCARE

3S RS M1 1.2  
Tlx 1.5

5 F: 60/274 ms  
Cutoff: 0 ms  
CC: 1  
34

60 ES  
Time to peak  
pot. val.

Tissue	Octave
Freq.	1.704 MHz
Proc.	8/1/10/6/9.2
Power	0 dB
FIS	84.7
Depth	13.0 cm
Color	
Gain	3 dB
Scale	1.00 kHz
Freq.	2.2 MHz
SV	1.22 mm



101 HR

Vivid i

TSI Freeze  
TSI Cutoff

©2011 General Electric Company – All rights reserved.

General Electric Company reserves the right to make changes in specifications and features shown herein, or discontinue the product described at any time without notice or obligation.

GE and GE Monogram are trademarks of General Electric Company.

\* Vivid and EchoPAC are trademarks of GE Medical Systems Ultrasound & Primary Care Diagnostics, LLC.

GE Medical Systems Ultrasound & Primary Care Diagnostics, LLC, a General Electric company, doing business as GE Healthcare.

## About GE Healthcare

GE Healthcare provides transformational medical technologies and services that are shaping a new age of patient care. Our broad expertise in medical imaging and information technologies, medical diagnostics, patient monitoring systems, drug discovery, biopharmaceutical manufacturing technologies, performance improvement and performance solutions services helps our customers to deliver better care to more people around the world at a lower cost. In addition, we partner with healthcare leaders, striving to leverage the global policy change necessary to implement a successful shift to sustainable healthcare systems.

Our “healthymagination” vision for the future invites the world to join us on our journey as we continuously develop innovations focused on reducing costs, increasing access, and improving quality around the world. Headquartered in the United Kingdom, GE Healthcare is a unit of General Electric Company (NYSE: GE). Worldwide, GE Healthcare employees are committed to serving healthcare professionals and their patients in more than 100 countries. For more information about GE Healthcare, visit our website at [www.gehealthcare.com](http://www.gehealthcare.com)

GE Healthcare  
9900 Innovation Drive  
Wauwatosa, WI 53226  
U.S.A.

[www.gehealthcare.com](http://www.gehealthcare.com)



imagination at work